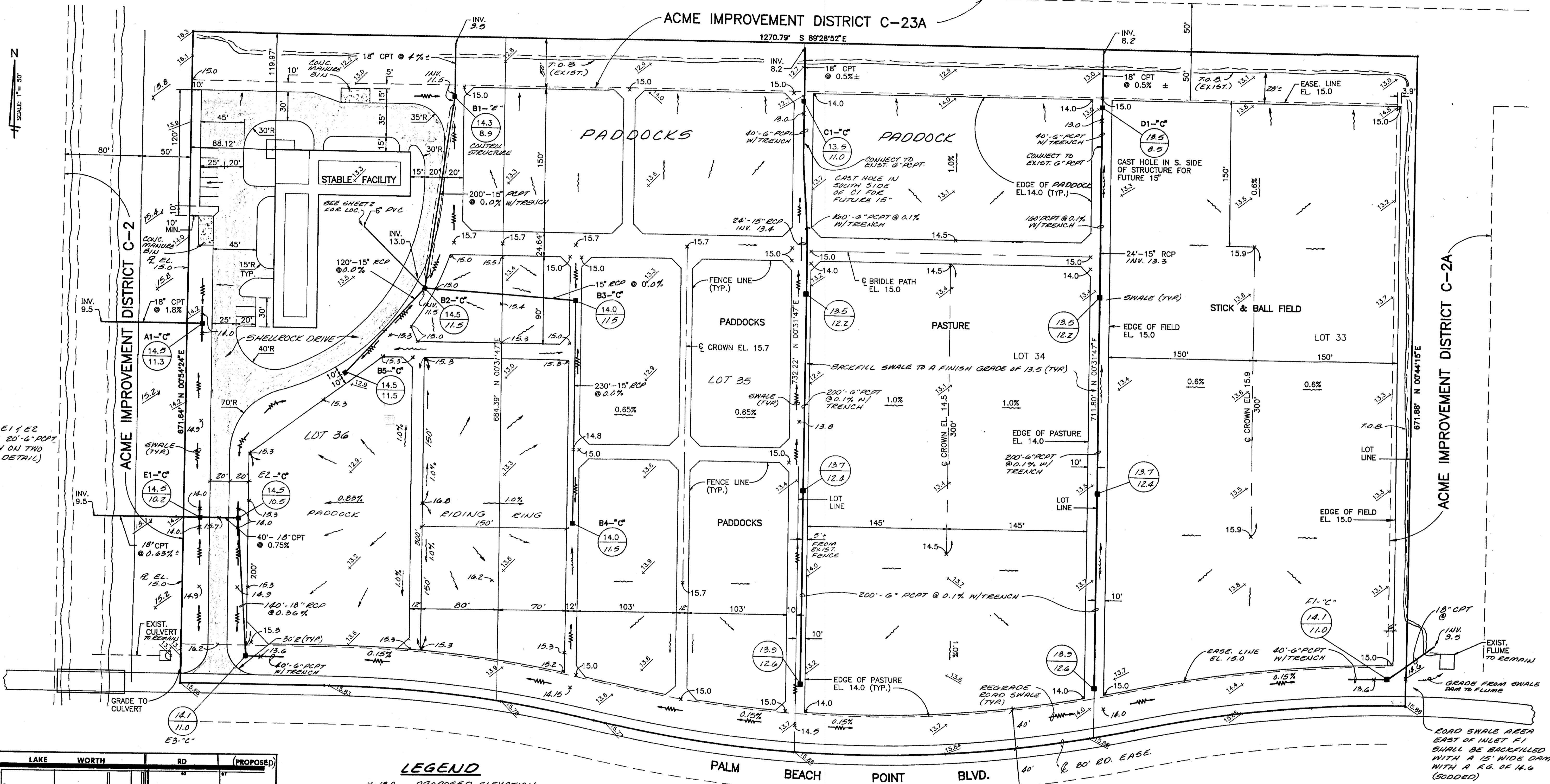


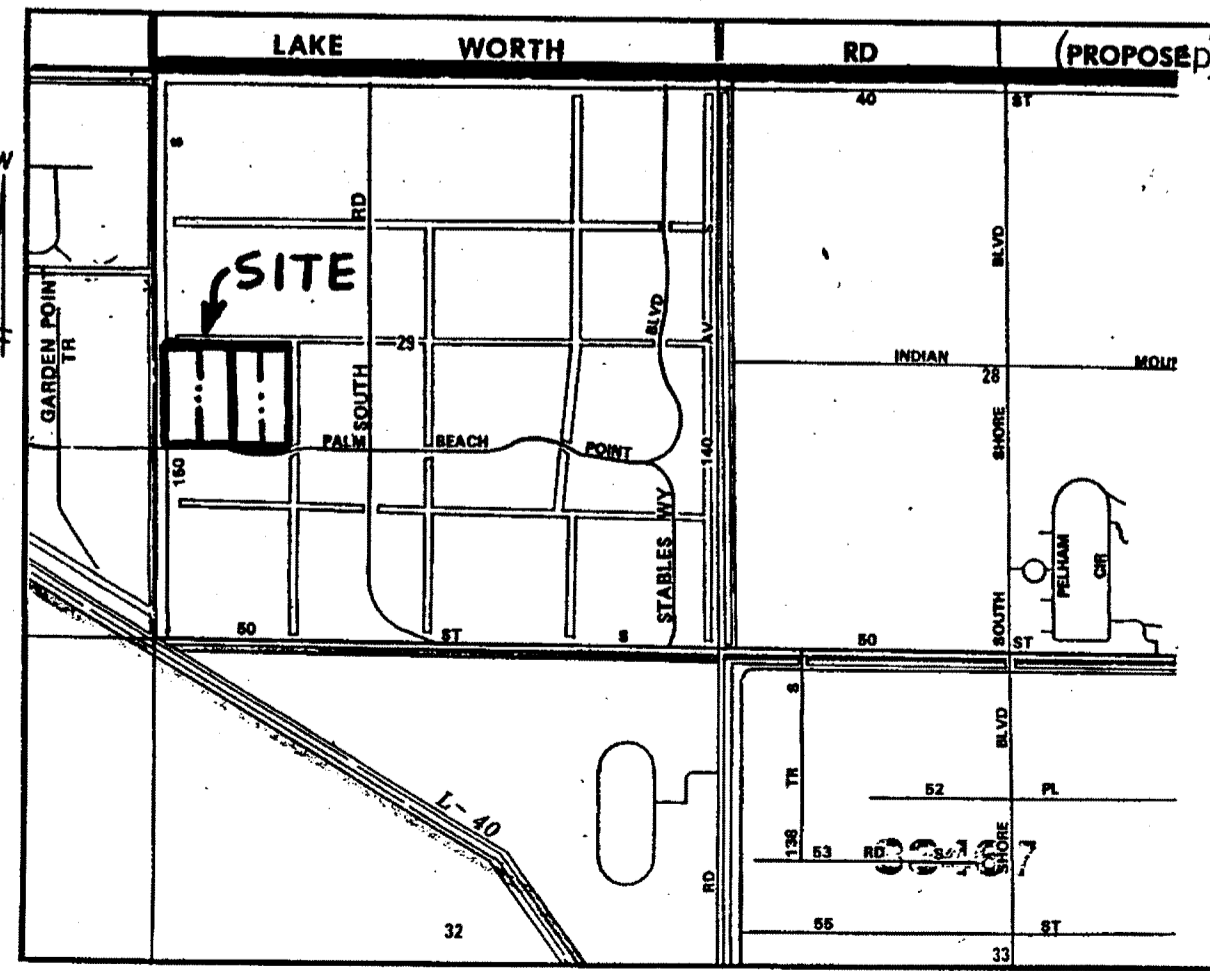
NOTE:
SEE SHEET 2 FOR
STABLE FACILITY AREA.

ACME IMPROVEMENT DISTRICT C-23A



NOTE:
INLETS A1, E1 & E2
SHALL HAVE 20'-6" RCP
WITH TRENCH ON TWO
SIDES (SEE DETAIL)

ROAD SWALE AREA
EAST OF INLET F1
SHALL BE BACKFILLED
WITH A 15' WIDE DAM
WITH A EG. OF 14.6
(RODDED)



LOCATION MAP
N.T.S.

LEGEND

- x-13.0 PROPOSED ELEVATION
- x-13.5 EXISTING ELEVATION
- (14.0) GRATE ELEVATION
- (10.0) INVERT ELEVATION
- DIRECTION OF FLOW
- SWALE
- +— DRAINAGE INLET & STORM SEWER
- PROPOSED SHELLROCK DRIVE

REVISIONS DATED 7-10-95 (AT OWNER'S REQUEST)

- 1) MOVED STICK & BALL TO LOT 33
- 2) MOVED PASTURE TO LOT 34
- 3) LOWERED CROWN ELEV. OF STICK & BALL FROM 16.7 TO 15.9
- 4) LOWERED CROWN ELEV. OF PASTURE FROM 15.8 TO 14.5 AND PERIMETER FROM 15.0 TO 14.0
- 5) ELIMINATED DRAINAGE PIPE AND INLETS BETWEEN STICK & BALL & PASTURE
- 6) LOWERED GRATE ON INLETS C1, C2, C3 & D1 FROM EL. 14.0 TO EL. 13.0
- 7) ELIMINATED DRAINAGE PIPE & INLETS ALONG LOT LINE COMMON TO LOTS 34 & 35

NO.	DESCRIPTION	DATE
1	ADDED DRAINAGE ALONG E.T.M. LOT LINES OF LOT 34. SWALE	7-10-95
2	REV. INLET GRATE ELEV. & ADDED INFILTRATION DEGRASS ETC. TO ADDRESS A.I.D. WATER QUALITY REQUIREMENTS	7-10-95
3	REV. RIDING RING LOCATION & SIZE PER CLIENT REQUEST	7-10-95
4	REVISIONS REQUESTED BY CLIENT	7-10-95

SIMMONS & WHITE, INC.
Engineers • Planners • Consultants
4623 Forest Hill Boulevard, Suite 112, West Palm Beach, Florida 33415
Telephone (407) 965-9144

SOLSTICE SOUTH STABLE FACILITY
LOTS 33, 34, 35 & 36
PALM BEACH POINT EAST
DEVELOPMENT PLAN

DESIGN E.M.	DRAWN A.W./C.B.	CHECKED C.B.	APPROVED C.W.	DATE 7-13-95	JOB NO. 95-056	DRAWING NO. 500-02	SHEET 1	OF 3
----------------	--------------------	-----------------	------------------	-----------------	-------------------	-----------------------	------------	---------

NOV 25 2014